

FREE!
EDITION #83
JUNE 2026

NZ COMMUNITY NEWSPAPERS AWARDS 2024
BEST COMMUNITY INVOLVEMENT - WINNER
BEST FRONT PAGE MAGAZINE - FINALIST

Māngere's 275 times

Our stories, our people, our Māngere
Kōrero paki ō tatou, Tāngata ō tatou, Ngā Hau Māngere ō tatou



BEHIND THE STALLS: MEET THE PEOPLE AT THE HEART OF OUR MARKETS

Mama Kimi and William. Part of the photo exhibition Gathered & Grown Here by Vinesh Kumaran. Read more on page 7.
Photo: Vinesh Kumaran

GET PEACE OF MIND WITH A NEW BUILD

Remove and rebuild with GJ's "It was the better option to knock down and rebuild than try to renovate. Just the peace of mind you have because its brand new." – York Family

09 274 2082 / gjgardner.co.nz



G.J. Gardner. HOMES



Southern Cross Campus students at TwoSevenFive day this year.

This year is New Zealand's General Election. We get to vote for the people and parties who will represent us in Parliament and form a government.

Parliament has passed the Electoral Amendment Act 2025, bringing in some changes to enrolment and how elections are run.

One of the biggest changes is that there is no more last-minute voting. Enrolment will close 13 days before election day, on October 25, 2026. This is going to greatly impact young people, recently immigrated people, and transient people who have previously been able to vote on the day of the General Election using

a special vote. It is important this year to enrol early. Even if you are 17 years old, you can still enrol to vote now if you will be 18 by October 25, 2026.

KEY ELECTION DATES

- Election Day is **7 November 2026.**
- Last day to enrol to vote is **25 October 2026.**
- For the Māori Electoral roll, the deadline for enrolled voters to change rolls is midnight, **6 August 2026.**



Editorial Team: Jo Keenan and Justin Latif

- ✉ editor@275times.co.nz
- 📷 [instagram.com/275Times](https://www.instagram.com/275Times)
- 📘 [facebook.com/275times](https://www.facebook.com/275times)
- 🌐 www.275times.com
- 📍 givealittle.co.nz/org/mangere-275-times

Want to advertise with 275 Times or have a story idea?
Email editor@275times.co.nz

CONTENTS

- 3 275 Day
- 4 The Housing Foundation
- 5 Māngere Bridge BID
- 6 Sons of Vao
- 7 Vinesh Kumaran market exhibition
- 8 Message from your local MP
- 9 Are we ready for the real world?
- 10 Samoan Language Week
- 11 Manukau Rovers Women's Rugby
- 12 Justine Skilling & the Ngahere Guide
- 13 Call to Wallis with Justin Haiu
- 14 Business Classifieds
- 15 What's On in Māngere
- 16 Community Directory

HOW TO ENROL

- You can enrol, check or update your details online at vote.nz using your NZ driver licence, NZ passport or RealMe verified identity.
- You can also call freephone **0800 36 76 56** to ask for an enrolment form to be sent to you.
- Or text your name and address to **3676.**

AUCKLAND, **531PI IS NOW ON 102.2FM**

CAN'T RETUNE? STREAM WITH US
ANYTIME AT PMN.CO.NZ



275 DAY GROWS BIGGER AND BETTER IN ITS SEVENTH YEAR



Rise Up Academy at TwoSevenFive Day 2026.



Singer from ASDAH



Southern Cross Campus volunteers



Event organisers Lily (left) and Fitz (right)

Māngere's cherished community celebration, TwoSevenFive Day, returned bigger than ever this year - with more stallholders, a bigger venue size, more community organisations, and an impressive fireworks display to cap off the evening.

Event co-ordinator Lily Sio says the day ran smoothly, and she loved being able to connect to so many providers, community groups and locals who turned out to support the day.

"It was great to see families and friends reconnecting, having fun, and enjoying being together," she says. "The atmosphere was positive, welcoming, and full of community spirit."

Now in its seventh year, 275 Day has cemented itself as a genuine community institution - so much so that people now take annual leave to attend.

Funding pressures did make planning more challenging this year, but Sio says the support of local businesses and organisations stepped in to make it happen. The day also delivered on its deeper purpose, with many reporting that they were able to find much-needed community services they weren't previously aware of.

"With rising costs and fewer community events happening, it's exciting when people can come together and enjoy a free event that is truly for everyone," Sio says.

Looking ahead, Sio hopes to see continued support from organisations, businesses, and funders.

"As a Pasifika, Māori South Auckland community, we've always understood the importance of the village in all initiatives - [and] it's events like 275 Day that bring that village together."

**"...IT'S EVENTS
LIKE 275 DAY THAT
BRING THE VILLAGE
TOGETHER."**

MASON & MORTIMER
Lawyers

*"Looking after your
legal needs locally."*

Ph: 09 296 0037

4/29 Coronation Rd, Māngere Bridge (By Naomi And Bill Kirk Park)

E: info@mamlaw.co.nz



Come with us and change your life!

13-19 WELBY PL MĀNGERE WEST

If you're dreaming of being a home owner, Māngere West could be the place to begin. Welby Place offers the opportunity to stay close to the communities you know, while stepping into a home of your own.



With **Shared Ownership** you buy 60%.
We buy 40% until you can buy us out.

2 Bed from **\$685K**
60% from **\$411K**

3 Bed from **\$760K**
60% from **\$456K**

4 Bed from **\$860K**
60% from **\$516K**



@housingfoundation

PROPERTY FEATURES



Townhouse & Stand-alone options



2, 3, 4 Bedrooms Homes



1, 2 Bathroom



Open Plan



Off-street Parking

MĀNGERE BRIDGE BID FACES UNCERTAIN FUTURE



A float from last year's Christmas Parade, funded by the Māngere Bridge BID.

The organisation that's behind Māngere Bridge's beloved Christmas parade, along with its vital CCTV network and nightly Security Patrols could be under threat.

According to Māngere Bridge Business Improvement District (BID) manager Kate Adams, her council-funded association faces an uncertain future after being told by Auckland Council they may have to be disestablished in 18 months due to not meeting new policy requirements.

However, the council says the door remains open for the BID to find a sustainable path forward.

In 2022, Auckland Council changed its BID policy, which included new requirements for business improvement districts receiving less than \$120,000 annually through targeted rates to reach that threshold in total income by July 1, 2028. The Māngere Bridge BID receives just \$36,465 in targeted rate funding each year - which is short of the mark.

But Adams argues the policy is being applied unfairly. The association has consistently generated well over \$120,000 in total annual income, and is projecting around \$165,000 this financial year through a combination of targeted rates, grants, sponsorships, and revenue from community events such as Sunday markets and fun runs.

"We meet the criteria," Adams says. "Judge us on our history and our history is strong."



Some of the members of the Māngere Bridge Business Improvement District. (L-R): Marcella Howarth, Mataiasi To'ofoho, Kate Adams, Shane Howarth, Corinne Cameron, and Lieng Kong.

BID administrator Corinne Cameron echoes that frustration.

"We invest over four times the value of our target rates into our Business District each year," she says, pointing to the BID's investment of roughly \$170,000 into the village this year, funded largely through sources beyond the targeted rate. The BID also funds beautification projects, village management, CCTV network and nightly security patrols throughout the village.

But these services, as well as the Sunday Markets, Christmas Parade, Family Festival, Fun Run & Half Marathon and Summer Live Music Series could all cease if the BID stopped operating.

"Once you lose a BID, you're never going to get it back," Cameron says.

However, in a statement provided to *275 Times*, Auckland Council's BID Team Manager Claire Gomas has clarified that there is currently no proposal to disestablish the Māngere Bridge BID, and that the policy change was designed to ensure financial sustainability, not to penalise well-performing BIDs. The council met with Māngere Bridge BID management

in May 2025 to discuss funding options, including the possibility of transitioning to a charity model to access broader funding sources.

"BID-operating business associations are driven by local businesses and property owners," Gomas said, noting that BIDs are fundamentally business-focused entities. She added that the association could continue to operate independently as an incorporated society regardless of the BID programme's outcome.

With 18 months remaining before the policy deadline, Auckland councillor Alf Filipaina says he's hopeful the Māngere Bridge BID and council's BID team can continue to work together to find a solution that works for everyone, adding that he's also happy to support.

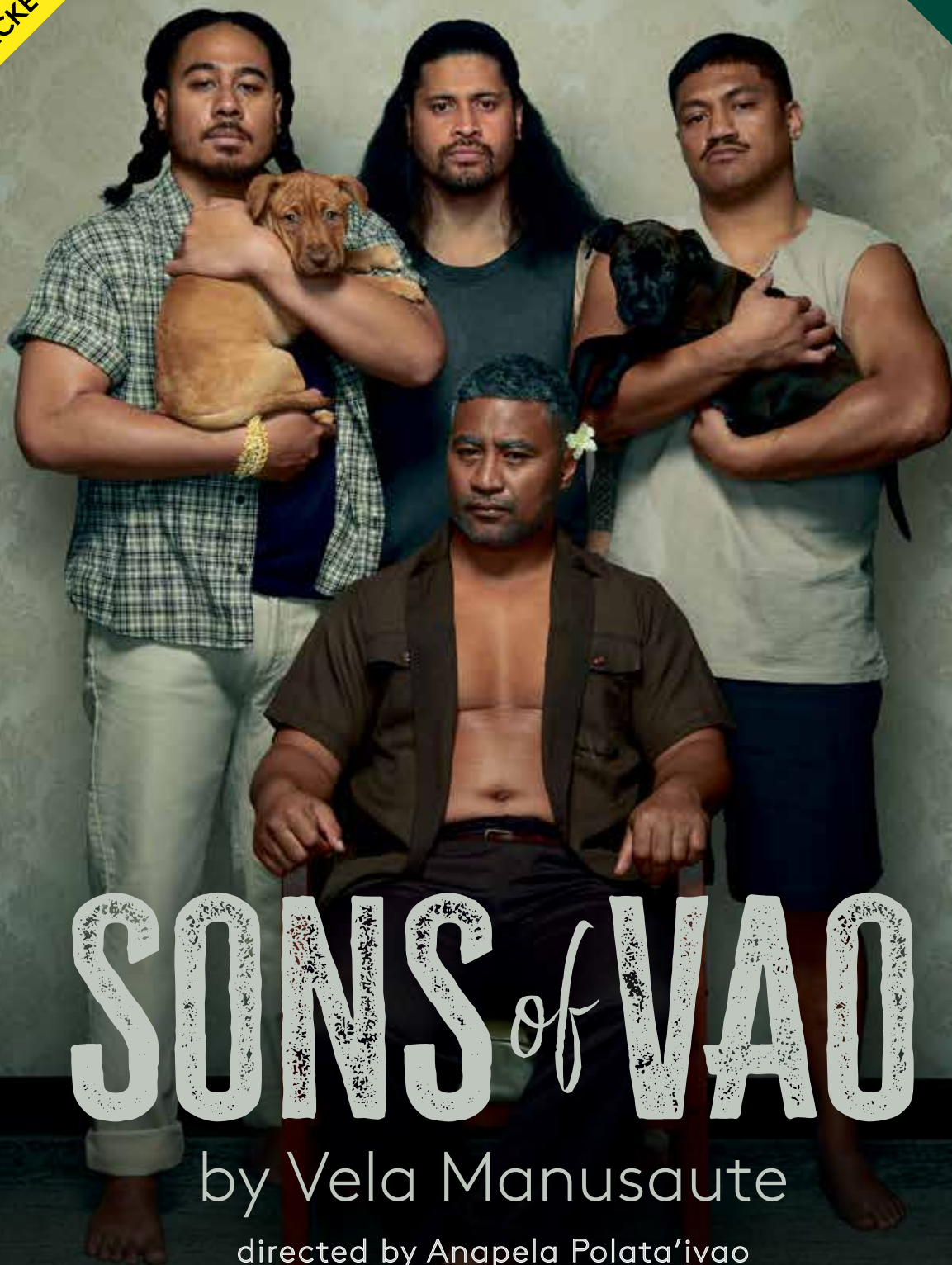
"If there's anything that I can do from an advocacy perspective, I'll do it," he says.

"I can see the benefits of the Māngere Bridge BID as they also benefit the wider Māngere community with all their events and security."

SELECT MAFANA
TICKETS FOR \$30

Forged in fire, bound by blood.

AUCKLAND
THEATRE
COMPANY



SONS *of* VAO

by Vela Manusaute

directed by Anapela Polata'ivao

18 JUNE – 5 JULY

BOOK NOW: ATC.CO.NZ

10
YEARS

ASB
WATERFRONT
THEATRE

Principal Funders:

creative *nz*
ARTS COUNCIL OF NEW ZEALAND / TOI AOTEAROA

Auckland Council

BEHIND THE STALLS:

MEET THE PEOPLE AT THE HEART OF MĀNGERE MARKETS



Vinesh and the stallholders in the exhibition on stage.
Photo: Joe Glassie-Rasmussen

Local photographer Vinesh Kumaran has turned his lens on the people behind one of Māngere's most beloved community institutions - and the result is an exhibition that captures far more than just faces.

Gathered & Grown Here documents the stallholders of the Māngere markets through a series of large-scale portraits

and an eight-minute short film featuring six interviews. The project, which took six months to complete, explores the stories, families and communities that have built their lives around the Saturday markets.

"It reflects the markets," Kumaran explains. "You get people from not only Māngere but suburbs



Vinesh Kumaran (right) with wife Elizabeth Kumaran (left) at the exhibition of *Gathered & Grown Here* at the Māngere Arts Centre
Photo: Raymond Sagapolutele

around Auckland that come and trade. There's banter between the stallholders - it's a whole community vibe."

For Kumaran, the project is also deeply personal.

Growing up in South Auckland, his father owned the local dairy, and all six siblings were expected to pull their weight behind the counter. That upbringing has given him an instinctive connection to the retailers he photographed.

"I think in some way I can relate to the people that trade at the markets," he says. "As a photographer, I want to tell stories that I can relate to, and also the community that's around me."

One stallholder, Akin, has been trading for over 23 years, which is long enough to watch his sons grow from nappies to near-university graduates, with the market income helping to fund their education.

Kumaran also spoke with migrant families who had built new lives in New Zealand through their market, arriving from countries like Laos and using their weekly stall as a way to establish themselves in their new homeland.

This project was funded by the Asian Artists' Fund, administered through satellites, with support from Foundation North, Creative New Zealand, and Auckland Council. Additional support was provided by the Māngere-Ōtāhuhu Arts Broker Fund, Sony New Zealand, and White Studios. The project was presented as part of the Auckland Festival of Photography.

The large-scale portraits have since been gifted back to the stallholders themselves, and will be displayed at markets across Auckland.

"It's more than artwork," Kumaran says. "It's something they can be proud of every time they set up their stall."

**MATARIKI IN
MĀNGERE EAST**
entertainment, prizes & activities for the whole whānau

FRI 24 JUL
5PM - 9PM
372 MASSEY ROAD
MĀNGERE EAST
COMMUNITY CENTRE
(Behind the Māngere East Library)

*Nau mai
Haere mai*

☆ **Dinner** ☆ **Local performances**
☆ **Learn more about matariki** ☆ **Maumahara**

Supported by

Ohomairangi Trust *"Ehara taku toa / he toa takahi engari, he toa takitahi"* māngere east community centre Māngere-Ōtāhuhu Local Board

MESSAGE FROM YOUR LOCAL MP

Talofa lava and warm pacific greetings, First and foremost, I wish to acknowledge families in our local community who are working incredibly hard to make it through the week as the cost of living soars.

Christopher Luxon promised to fix the cost of living. Three years later, it costs more to buy your groceries, see your doctor, and pay the bills.

Budget 2026 was the Government's last chance to show it had a plan to make life better for New Zealanders, but it has failed. National will sack 9,000 people delivering essential services Kiwis rely on – and to pay for tax cuts for property speculators and tobacco



affordable New Zealand. We will focus on what matters: your job, your health, your home, so everyone can build a future here – starting with free doctor's visits and an investment fund to back Kiwi business.

Please feel free to contact my office on 09-2731150 or email me at Mangere@parliament.govt.nz.

Manuia tele
Lemauga Lydia Sosene
MP for Māngere

companies.

Everything is on the chopping block. The support worker at your kids' school. The border inspector. The family caseworker. Vital jobs are at risk and it'll be Kiwis paying the cost of Luxon's cuts.

Labour has a plan for a more

*Approved by Lemauga Lydia Sosene MP, Parliament Buildings, Wellington
Funded by Parliamentary Service*

(sponsored content)

YOUR LOCAL TEAM ON AND OFF THE FIELD



At Barfoot & Thompson Māngere, we're proud to stand shoulder to shoulder, and give back to the schools, clubs and families who help make this community so great. Our current sponsorships include Māngere Central School, the Hawks U13s at Māngere East Rugby League Club, Waterlea School's Brickshow Fundraiser and the Manukau Rovers Rugby Club.

Supporting local, where it counts.

Real Estate Sales Property Management

**BARFOOT
THOMPSON &**
LICENSED REAA 2008

Māngere
09 257 5680

mangere@barfoot.co.nz • 359 Massey Road

MĀNGERE COLLEGE MEDIA STUDENTS ASK THE TOUGH QUESTIONS

This is the first written piece by Māngere College Media Club students as part of the 275 Times Youth Mentorship Programme sponsored by the Māngere Ōtāhuhu Local Board. This is an opinion piece, leading with their question 'Are we ready for the real world?'

We are told school prepares us for the real world. We are encouraged to study hard, aim higher, and that a stable future will follow. But the real world is not waiting.

Living costs are rising, competition in the job market is increasing, challenges with Artificial Intelligence surface, and the pressure to succeed increases; thus, high school students are left skeptical.

This leaves many students, including myself, questioning whether we are truly ready for the real world, or if the real world is changing faster than we can prepare for it. When people tell us to "get ready for the real world," what exactly does that mean?

For many students, the future feels more uncertain than ever.

Artificial intelligence is transforming industries and changing the skills employers look for. At the same time, companies are becoming more selective about hiring, making it harder for young people to gain experience and secure stable employment.

Rising living costs are adding further pressure, as housing, food, and education become increasingly expensive. As we think about university, careers, and independence, many of us are left wondering whether we are truly being prepared for a future that is changing so rapidly.

Even though we are expected to prepare for the real world, many students are already facing barriers that make this difficult. Balancing school attendance, assessments, family responsibilities, and personal commitments while planning for the future can quickly become overwhelming. On top of this, some students face additional obstacles such as limited access to transport, financial pressure, and a lack of resources or support — barriers that can block the very opportunities we need to succeed.

Many students also carry responsibilities outside of school that affect their time, energy, and ability to focus. Even when we are encouraged to work hard and aim high, the challenges students face are very real, and often go unseen.



Students involved in writing this opinion piece. (L-R) Back Row: Alisha, Trisha, Lawrence. Middle row: Raeesha, Ansha, Shaziyana, Anushka. Front row: Charlene, Safa. *Image designed by Lawrence.*

To succeed in the real world, students need more than good grades.

Schools need to go beyond traditional classroom learning by providing better career guidance, financial literacy education, and more opportunities for work experience.

These would help students build practical skills, confidence, and a clearer sense of their future pathways. Mental health support is equally important, as many students face significant stress while juggling school, family, and personal responsibilities. Schools should also help students understand and adapt to emerging technologies like artificial intelligence, and use them responsibly.

Beyond schools, employers,

families, and the government all have a role to play - through mentorship, encouragement, financial support, and clear pathways into employment. Investing in young people now will mean a generation better equipped to thrive in a rapidly changing world.

So, are we ready for the real world? The honest answer is: not quite yet, but we could be. With the right support from our schools, families, and a better education system, young people can be equipped to face what lies ahead.

We do not need to have all the answers right now. We just need the pathways to find them.

FROM THE HIGH MOUNTAINS ARE THE BLESSINGS OF THE VILLAGE



Idalene (standing) teaching students from Rise Up Academy at a Samoan Language Workshop at the Māngere Arts Centre.



Musika in the Fale by the Papatoetoe High Music Department.

The Māngere Arts Centre marked Samoan Language Week with free workshops, performances, and activities, and for coordinator Idalene Ati, it was personal.

"Māngere is the heart of visual and performing arts for Māori and Pasifika," Idalene said. "What we try to do is emphasise and push out free workshops for the community for all the Pacific language weeks."

For Idalene, Samoan



Mea'alofa Elei workshop.



Siapo Auvae from the Māngere Arts Centre.

Language Week was more than a programme to deliver. It was her own *tautua*, a word meaning service or contribution to the community she loves.

This year's celebrations were guided by the theme "E afua mai i mauga tetele manuia o le 'nu'u" which translates as "From the high mountains are the blessings of the village." It was a theme that resonated deeply with Idalene's vision for the arts centre itself.

"I hope that Māngere Arts is a maunga, or mountain, for the community, which is our village around us."

Each year, the team pushed to go further than the year before, weaving music, dance, and arts and craft through daily activities.

Idalene said this year felt especially significant, with elevated decorations, stronger workshops, and a sense of going all out.

A highlight was working with students, particularly New Zealand-born rangatahi who may have had limited connection to the Samoan language. Idalene said the workshops created a safe space where learners at every level could grow.

"It is always nice to have a mixture, those whose second language is English and first language is Samoan, and those starting from basics. It does not matter where you start. Never be afraid of learning."

For Idalene, the deeper purpose was identity. In a world where young Pasifika people are navigating questions of belonging and diaspora, the arts centre offered somewhere to stand tall.

"Knowing that everyone is still learning, even the facilitators, and to never be afraid of that."

YOUR AD COULD BE HERE

Email: editor@275times.co.nz to find out more

WHEELS OF CHANGE: BIKE DONATIONS PUT MORE STUDENTS IN THE SADDLE

A Māngere school is celebrating a new fleet of high-spec bikes thanks to a partnership between community cycling organisation Time to Thrive and the specialist travel agency Ride Holidays - making it the fourth time the two organisations have delivered bikes to a local school.

Southern Cross Campus is the latest recipient of the Ride Holidays bike donation programme, which sees founder Karl Woodcock and fellow cyclist Martin Rees fundraise as they ride around the world, channelling the proceeds into putting bikes into schools.

Time to Thrive founder Mr Tee, who runs cycling workshops across schools, helped broker the connection, and says the impact has been immediate.

"They're just excited, wanting to be unique," he said of the Southern Cross students, who have been taking part in Time to Thrive workshops at the school for the past five weeks. "We're teaching them how to do all the safety stuff and mechanics - and yeah, they love it."

The Southern Cross donation is the fourth partnership delivered to Māngere schools. Earlier recipients include Jean Batten Primary School, which received a fleet of 30 BMX bikes, followed by Favona Primary School, and then Māngere College.



Southern Cross Campus students attending the blessing of the bikes, led by Matua Rod Ratu.



Mr Tee speaking at the event.



Martyn Reeves (left) and Karl Woolcott (right) from Ride Holidays alongside the bikes they donated.

Mr Tee says the bikes themselves have helped generate a lot of interest in cycling.

"These bikes are not your average bikes, they're next level."

But the programme goes well beyond handing over hardware. Time to Thrive runs in-school workshops covering bike safety, mechanics, and riding skills, and Mr Tee has a larger

vision for what comes next - training senior students as bike ambassadors, mechanics, and instructors, so they can teach younger riders coming through the programme.

"You need to create those arenas where they can lead," he said. "So they can teach the next people coming through."

KORU SCHOOL RACE TO VICTORY IN NIB JUNIOR \$10K RELAY



"Well done to all the competing teams and a special congratulations to Koru School on their win. We look forward to seeing the impact the prize will have on their students, whānau and community," said nib NZ Chief Executive Skye Daniels.

A team of fast-footed tamariki from Koru School in Māngere has claimed the \$10,000 prize at this year's nib Junior \$10K Relay, racing their hearts out at Eden Park during half-time at the Blues vs Hurricanes match on Saturday, May 16, 2026.

The winning team was one of eight finalist teams, each made up of 10 runners aged 11 to 13, representing schools and junior rugby clubs from across Auckland, North Harbour and Northland. Cheered on by thousands of fans, the young athletes took to

one of New Zealand's iconic sporting grounds for an unforgettable relay experience.

One of Koru School's players who ran on the night, 12-year-old Noah Pulepule, said running on Eden Park was very fun, with the team embracing all the excitement and jitters of the occasion.

"We felt a bit nervous at first, but we liked that pressure," said Pulepule. "The pressure feels good when you try to win. We were very happy for the opportunity."

NEW SHOW OPENS THE FALE DOOR ON PASIFIKA TRADITIONS



Bella Kalolo-Suraj (left) and Haanz Fa'avae-Jackson (right) who star in the series *400 Weddings and a Funeral*.



John Pulu, who has a role in *400 Weddings and a Funeral*.

A new documentary series celebrating Pacific traditions has arrived on New Zealand screens, and a familiar Māngere face is among its cultural voices.

400 Weddings and a Funeral launched on TVNZ One on May 16 offering an insider's guide to Pasifika weddings and funerals in Aotearoa.

Hosted by Shortland Street star Bella Kalolo-Suraj and Haanz Fa'avae-Jackson, the series features well-known Pacific personalities including Tofiga Fepulea'i and Nicole Whippy, unpacking not just what happens at these events, but why it matters.

Broadcaster John Pulu appears as one of the show's cultural commentators, a role he said he was honoured to take on.

"After years of working in the media as a TV and radio broadcaster, I was invited to participate as a cultural commentator to provide my take on the Pacific traditions and community dynamics depicted in the series," Pulu said.

For Pulu, one of the standout aspects of the production was seeing Pasifika people represented both on screen and behind the scenes.

"From behind the scenes to in front of the camera, the team had a visible presence. It was a wonderful opportunity to share who we are and celebrate how we conduct weddings and funerals, our way."

He said the show would resonate strongly with Māngere locals, while also offering something valuable for wider New Zealand audiences.

"The series showcases various

Pasifika customs, and I believe it will be great for both non-Pasifika people and our own community to see how others hold their events. It is not only an educational documentary but also a fun look at our cultures."

At its heart, Pulu said, the series carried a message about what makes Aotearoa special.

"Māngere is one of the world's most diverse places. Our country is unique because we embrace diversity; people come here from different places, yet we share and celebrate together."

400 Weddings and a Funeral is available to watch now on TVNZ One and TVNZ+. Follow the show on Instagram and TikTok at @400weddingsandafuneral.



275 TIMES EVENTS

Stay up to date with all things Māngere!

Check out our events calendar at www.275times.com/events to find all the latest events happening in Māngere.

Got an event of your own? It's easy to add it! Just head to the calendar on our website, Click on 'Submit

your event' and fill out the form with details of your event. Once submitted, your event will be reviewed and uploaded.

Or, if you'd prefer, simply email the details to us at editor@275times.co.nz and we'll add it for you.

Let's keep Māngere connected.

FLOOD RESILIENCE PROJECTS BRING RELIEF AND CONFIDENCE TO MĀNGERE



NZ's largest pipe lift this year, at Harania Creek. Photo by @cuetonemedia / Cuetone Media.



The dawn blessing of the completed bridge at Walmsly Road above Te Ararata Creek.

Two major flood resilience projects in Māngere are nearing completion, bringing with them a sense of relief for a community that has not forgotten the devastation of 2023.

The Blue Green Network delivery team has been working simultaneously on the Harania Creek Flood Resilience Project and the Te Ararata Creek Flood Resilience Project, two significant infrastructure upgrades designed to reduce flooding across the area. For many locals, seeing the work reach its final stages has been an emotional milestone.

Māngere-Ōtahuhu Local Board Chair Kaea Walter Inoke-Togiamua was present at the blessing of the Walmsley Road Bridge, one of the project's key moments, and said the significance of what was being delivered was not lost on him.

"The weather incident in 2023, that was an experience which affected our community, but I think it left some of our community traumatised," he said.

"A project like these, the Blue Green project at Te Ararata and Harania, those were very significant."

He said the work had done more than improve infrastructure - it had restored confidence.

"Every now and again, when we



The 2023 flooding in Māngere.

get those heavy downpours, I know our community will feel a lot more confident and encouraged to see the major work undertaken to mitigate the flooding that we've had."

At the heart of the Harania project is a technically complex pipe installation that project manager Leighton Gillespie described as a genuine engineering feat. A 2.8 metre concrete pipe weighing 110 tonnes was lifted into place in what is expected to be New Zealand's largest crane lift this year, spanning 48 metres. The new pipe connects to the Eastern Interceptor — New Zealand's largest operational wastewater pipe, a 2.5 metre concrete line built in the 1950s.

Gillespie said the upgrade would have a tangible impact on the properties most at risk.

"Right now it will be about 45 to 55 properties that won't flood as a result of this project. In a future scenario, taking into account climate change,



Construction of the Walmsly Road bridge.

we're looking at about 95 properties."

He was clear, however, that the project was not a complete solution on its own.

"It's not the silver bullet, it doesn't solve everything. But it basically means once stormwater gets to the stream, it can be passed forward.

"This will never be an entry point for flooding in the future."

Gillespie also acknowledged the funding that made both projects possible, with 62 per cent coming from central government, a direct outcome of the 2023 flooding events.

For Inoke-Togiamua, the message was simple: what was promised is being delivered.

"It just gives our community confidence that work has been undertaken to mitigate any further weather incidents we encounter.

"That, to me, was huge."

MĀNGERE BUSINESS CLASSIFIEDS

GET IN TOUCH IF YOU WOULD LIKE TO INCLUDE A LISTING HERE. STARTING AT \$20 PER CLASSIFIED

Employee Advocate - Help for Work Related Disputes

Teresa Brown (Māori, Tongan, Samoan) (LLB, LLM)
teresa@brownpower.co.nz
Ph 022 100 8452

Terry Allat

Māngere-based lawn mowing service. Also offers 2 free lawn mows for elderly on Fridays.
027 802 7526.

P Builders Ltd

NZCB & LBP qualified builders.
Phone: 021 025 07428
Email: pnaidu@pbuilders.co.nz
pbuilders.co.nz IG: pbuildersnz

Kevin Madsen

Wooden Fence Repairs

Ph 021 027 73498
Located in Māngere Bridge.
Replace posts, pailings etc.

Arizto

Real Estate company, based in Māngere Bridge. Team Suz and Kate 02108398909 / 021776139

Kaitiaki O Manawa

Restores headstone art and inscriptions. Jade Rehu
Facebook page: Kaitiaki o manawa
Email: aotearoa102030@gmail.com

K&N Cleaning.

We specialise in Move In/Move Out cleans, Deep Cleaning, and Builders Cleans.
021 292 2253 or via email at kncleaning@outlook.co.nz.

Tali The Mowing Magician

Gardener & Landscaping
Ph: 0226464761
Email: talifakava@outlook.com
Socials: Fb, IG, Tiktok @talithemowingmagician

Dessy Sportswear

Custom team uniforms for school and team sports. Email dessysports@gmail.com

Midas Onehunga

Car service, repairs, tyres, WOF, transmissions etc. 09 634 5983
26 Selwyn St, Onehunga

MĀNGERE TOWN CENTRE

Ph: 09 275 7078
office@mangeretowncentre.nz
www.mangeretowncentre.nz

FOOD & BEVERAGE

Mr Katsu Māngere	0210376358
Pacific Fresh Fish	09 257 5135
Pizza Curry Corner	09 257 5100
Sushi Time	09 275 0893
Zara Kebab	0212105602

RETAIL

Feathers	09 257 0909
Jit Shoes	09 275 0405
Māngere Fashions	09 256 0303
Māngere Jewellers	09 255 5907
Māngere Mini Mart	022 636 1371
Māngere Post Shop	021 762 478
Megastar Fashions	09 275 6962
My Hairdressers & Barbers Salon	09 218 9161
Nesian Collective	027 255 2049
One Stop Pak Māngere	09 215 8383
Pacific Fashions	021 510 071
Regal Apparel International Ltd/	
Megastar Fashions	09 275 6962
Sunlight clothing shop	021 301 987
TechFixers Māngere	09 255 5105

SERVICES

BaderDrive Doctors	09 275 858
Beauty By Harpi	022 182 0071
Māngere Budgeting Services Trust	0508 22 22 83
Māngere Dental Centre	09 275 7754

Anela's Kitchen

Pacific baking business
andrew.lameko@gmail.com
IG: @anelas_kitcehn | 022 590 8542

The Queen Shirl'e Academy

Performing arts training, personal life coaching, podcast education, adult speed dating events, MC & event hosting. Ph 021 274 9979
qsacademy101@gmail.com.

Applied Electrical

Māngere based electrical business.
www.appliedelectrical.co.nz
021 157 1864
Patrick@appliedelectrical.co.nz

Custom Designz Workshop

Pacifika 21st keys & wall art
020 4889 258

MĀNGERE BRIDGE VILLAGE BUSINESS ASSOCIATION

Ph: 021 776 139
info@mangerebridgevillage.co.nz
www.mangerebridgevillage.co.nz

CAFE/RESTAURANT/TAKEAWAYS

Brandy's Roasts	09 6363998
Hong Kong Takeaways	09 6347159
Neptune Seafoods	09 6369171
Lucky Café	09 6369400
Ros Bake	09 6345475
Coronation Restaurant	09 6340969
Burger Shop	09 2186327
Happy Horse	09 6365053
Ruby Red Café	09 6346454
Phnom Penh	09 6363586
Hong Kong Bakery	09 6367756
Village Butcher	09 6367856
Black Box Pizza	09 6369999
Butter Chicken Factory	09 2560500
Golden Sunrise Bakery	09 6348365
Māngere Bridge Takeaways	09 6342463

CHILDCARE

Small Kauri Educ Centre	09 6360644
-------------------------	------------

HAIR/BARBER/BEAUTY

Village Barber	021 135 6370
Keith the Barber	027 478 3598
Bridge Beauty	09 3201667
Hair Zone	09 6365747

HEALTH

My Dental Mangere Bridge	09 2421130
MB Pharmacy	09 6364249
Dr Usha Chand	09 6342542
Local Doctors	09 2544290

LAUNDROMAT

Coronation Laundromat	0221093125
Sunrise Laundromat	Shop 27

LAWYERS

Mason and Mortimer	09 2960037
--------------------	------------

REAL ESTATE

Ray White	09 6369992
-----------	------------

RETAIL

Bridge Mini Market	09 6365433
Post Shop	09 8926109
St Vincent de Paul	09 6361290
Coin Save	Shop 33
Coin Max	Shop 34A
Hammer Hardware	09 6367084
Māngere Bridge Flowers	09 6221292
Māngere Floral Studio	09 6366291
Fresh Choice	09 6368424

WHATS ON IN MĀNGERE

MATARIKI EVENTS

MATARIKI ORA

A focus on wellbeing during Matariki. 27 June, 10am-2.30pm. 17 Elmdon St, Māngere Envirohub. Rongoā activations, kai motuhake demonstrations, shared community kai (12.45pm), kōreo ātea, mai i kurawaka, kaumātua & kuia kaitiakitanga + talanoa and more.

MĀNGERE BIKEFIT

Meet at the Community Hub, Waddon Place.

10 July - Ako Ako Rock of Māngere. Meet 5.45am.

11 July - Māngere Marae to Marae. Cycle over to see 5 of Māngere's Marae to Marae. 9am.

12 July - Sunday's Spin Eke Pahikara. Sunday's Fitness Session. 8am.

15 July - WOW Ride Whanau on Wheels. 4pm.

16 July - Rangatahi Eke Pahikara. School Holiday RideOut for 11-20yrs. 12pm.

17 July - Manawatia A Matariki. Whanau Pahikara celebration. Sunset RideOut. Kai, Music. 4pm.

MANUKAU URBAN MARAE AUTHORITY MATARIKI CELEBRATION

Friday 3 July. 10am-3pm. Free entry, live cultural performances, stalls, kai providers. Ngā Whare Waatea Marae at 31 Calthorp Close, Māngere.

MATARIKI KI MĀNGERE

Wednesday 1 July, 4.30-7.30pm at Te Wānanga o Aotearoa.

MATARIKI IN MĀNGERE EAST

Friday 24 July. 5pm-9pm. Māngere East Community Centre. Entertainment, prizes & activities for the whole whānau.

PROBUS CLUB OF MĀNGERE BRIDGE

Active retirees are invited to come along for morning tea, fun, friendship. Meets 4th Friday of each month. Bridge Park Bowling Club, 27A Taylor Road.

PAPATUANUKU KOKIRI MARAE KAI IKA. Bring cans to swap for free fish head and frames. Māngere Centre Park car park. Wednesdays & Fridays: 11.00am.

KOHA CAFE. Open Thursday, Friday and Sunday, 10am-2pm.

FRIENDS OF THE FARM MĀNGERE BRIDGE CRAFT GROUP Every Thursday, 2pm-4pm at the Māngere Bridge Library.

BRIDGE CONNECTION INFORMATION EVENINGS Every Tuesday, 6.30pm-8pm at St James Church Hall. Connecting with our history.

THE MĀNGERE BRIDGE WALKING GROUP

Meets every Tuesday and Thursday at 8.50am outside the Hong Kong Bakery for an hour's walk followed by time at one of the cafes. All Welcome.

BOXFIT (WITH PONO BOXFIT) Free community boxfit fitness classes. Mondays 6pm, Māngere East Community Centre. Wednesday

ME FAMILY SERVICES LIVING RESOURCEFULLY 6 week programme, winter wellness edition. Begins Tuesday 9 June, 10am-12pm. Dates: 23 June, 30 June, 2 July, 7 July. For more information contact colleen@mefsc.org.nz.

JOB VACANCIES There are 2 job vacancies in the Taiao Team: Waste Minimisation Facilitator and Pest Free Assistant. Contact: mefsc@mefsc.org.nz

FREE KAI @ MOANA NUI-A-KIWA Every Wednesday 5.30pm. Ran by Life Community Kitchens. All welcome.

TURUKI HEALTHCARE Head to www.turukihealthcare.org.nz/bookings for an amazing range of community classes & workshops: **Low Carb Cooking Class, Romiromi, Walk & Talk, Maramataka, Art Therapy, Raranga Hauora, Kuia/ Kaumatua programme.** MUST BOOK - jcannons@thc.org.nz <https://www.turukihealthcare.org.nz/bookings>.

MĀNGERE EAST COMMUNITY CENTRE FREE CLASSES

Mondays: Te Reo Māori (6pm-8pm), Pono BoxFit Classes (6pm-7pm)
Tuesdays: Sewing for beginners (10am-1pm), Te Reo Māori (12.30pm-2.30pm), Hulafit (6pm-7pm), Ethnic Arts & Crafts (6pm-8pm)
Wednesdays: Beginner sewing (5pm-8pm)

Thursdays: Sewing for beginners (10am-1pm)
Fridays: Korowai Class (10am - 2pm) FREE Parenting Programmes (Ante Natal, 3yr-8yr etc) Daily ESOL Classes (English for speakers of other languages) .

Venue hire plus bus and van hire also. OSCAR Programmes.

REGISTER TODAY: www.mangereeast.org info@mangereeast.org | Ph: 275 6161

WHARE KOA MĀNGERE COMMUNITY HOUSE

141 Robertson Rd, ph:(09) 275 4920. FB: @WhareKoa

IG: @wharekoamangere
MONDAY: Emerge Aotearoa: 10am-12.30pm, Sew Simple: 1.30pm-4.30pm, Tahī Moana Creatives 6pm - 8:30pm.

TUESDAY: Akatangi Ukarērē: 10am-12pm, Fale Pasifika Parenting Programme 1pm-3pm, Spoken Word Navigators: 6.30pm-9pm

WEDNESDAY: Diamonds In The Rough: 10am-12pm, Tuitu'u Heilala: 1pm-4pm, Adullum Art: 6.30pm-8.30pm

THURSDAY: Tiare Taina Māmās 10am - 2pm, TULOU 11pm - 1pm, GameTan 5:30pm - 7:30pm

FRIDAY: Polynesian Creative Arts: 10am-2pm, That Rental Plug 10am - 12pm, Brownālf Creative Lab: 4pm-8.30pm

SATURDAY (MONTHLY): Naitisian Fijian Mothers: 5pm-9pm Email: naomi.tuaeu@aucklandcouncil.govt.nz.

MĀNGERE HISTORICAL SOCIETY

The next meeting on Tuesday 21st July in the St James Anglican Church Hall, 31 Church Rd Māngere Bridge. It will start at 1pm. All are welcome. The speaker will be Norm Judd.

Community DIRECTORY

A COMPACT LIST FOR COMMUNITY SUPPORT, RESOURCES AND ADVOCACY. CONTACT EDITOR@275TIMES.CO.NZ FOR ANY UPDATES

ADVOCACY

Auckland Action Against Poverty
Māori Wardens Office, Waddon Pl
advocates@aaap.org.nz

Citizens Advice Bureau Māngere
Shop 17, 93 Bader Drive
www.cab.org.nz | 09 275 6885
0800 367 222 | mangere@cab.org.nz

Communities Against Alcohol Harm
contact@communitiesagainstalcoholharm.co.nz

Māngere Law Centre
Shop 27, Mangere Town Centre
reception@mangerelaw.org.nz
https://communitylaw.org.nz/centre/
auckland/mangere/ Ph: 09 275 4310

MP for Māngere
Māngere Electorate Community
Office, Shop 9, 93 Bader Drive
Mangere@parliament.govt.nz

BUDGETING

Māngere Budgeting Services Trust
Shop 8B, Māngere Town Centre
appointments@mbst.org.nz
0508 222 283 | www.mbst.org.nz

Viola Budgeting
Māngere Baptist Church, Bader Dr
vpibs@vaiola.org | 09 256 9639
www.vaiola.org/contact.html

COMMUNITY FACILITIES

Cook Islands Development Agency NZ
287 Kirkbride Road, admin@cidanz.co.nz
https://www.cidanz.co.nz

Maangere Mountain Education Centre
100 Coronation Road, Māngere
Email: info@mangeremountain.co.nz
Ph: 09 634 7305

Māngere Arts Centre
Cnr Bader Drive and Orly Avenue
mangereartscentre@aucklandcouncil.
govt.nz | 09 262 5789

Māngere East Community Centre
372 Massey Road | Ph: 09 275 6161
info@mangereeast.org
https://mangereeast.org

Māngere Bridge Library
5/7 Church Road | 09 377 0209

Māngere East Library
370 Massey Road | 09 377 0209

Māngere Town Centre Library
IG: @mtc_lib | 09 377 0209

Moana-Nui-A-Kiwa (Pools & Leisure)
66R Mascot Avenue | 09 275 8979
mangerepools@aucklandcouncil.govt.nz

Ngatapuwaē Community Centre
phil.d@strive.org.nz | 09 275 4470

Old School Teaching Garden
299 Kirkbride Rd | https://
aucklandteachinggardens.co.nz/

Papatuanuku Kokiri Marae
141R Robertson Road, 027 256 1472
admin@pkm.org.nz | https://pkm.org.nz

Whare Koa Community House
141 Robertson Road | 09 379 2030
https://www.facebook.com/WhareKoa

COMMUNITY SAFETY

**Auckland Council Animal
Management Team (report dogs)**
Ph: 09 301 0101 | 0800 462 685

Neighbourhood Support Māngere
022 010 4707 | ns4mangere@gmail.com

**Neighbourhood Support Māngere
Bridge** | mangerebridgens@gmail.com

HEALTH & WELLBEING

Bader Health Care
09 275 8598 | info@bdhealthcare.co.nz

Turuki Healthcare
32 Canning Crescent | 0800 493 552
www.turukihealthcare.org.nz

HOMELESSNESS SUPPORT

LinkPeople
0800 932 432 | linkpeople.co.nz

Kāhui Tū Kaha
09 531 4040 | 0800 678 323
reception@kahuitukaha.co.nz

HOUSING SUPPORT

Monte Cecilia Housing Trust
30 Windrush Close, Māngere,
0800 624848.

Pacific Healthy Homes Initiative
(Support e.g. curtains, heating, insulation)
Cause Collective: 027 301 3326
thecausecollective.org.nz/contact-us
AWHI Healthy Homes Initiative:
referrals@awhi.co.nz or 0800 100642

Strive Community Trust
294A Massey Road, Māngere
Ph: 09 255 0144 | info@strive.org.nz

SUPPORT

**Fale Pasifika (Pacific Womens
Refuge)** Ph: 09 6220572
Crisis Line: 0800 733 843
admin@falepasifika.org.nz

I AM Mangere
027 348 9454 | www.iamhaponi.co.nz
connect@iamhaponi.co.nz

Māngere Work and Income
93 Mascot Ave Mangere
www.workandincome.govt.nz/about-work-
and-income/contact-us/index.html

Māngere-Ōtāhuhu Local Board
mangereotahuhulocalboard@
aucklandcouncil.govt.nz | 09 301 0101

Manukau Urban Marae Authority
Foodbank, Whānau Services + more
0800 686 232 | www.muma.co.nz

Martin Hautus Foundation Trust
0223920189 | talei@mhfoundationtrust.
org.nz | www.mhfoundationtrust.org.nz

Taime Pasifika Cancer Support
021 0248 5177 | https://taime.co.nz

**Te Oranga Kaumatua Kuia Disability
Support Services Trust**
64 Mascot ave | 09 255 5470
kingi.martin@teorangakk.org.nz

**Te Whanau Rangimarie (Women's
Refuge, Favona)** Ph: 09 275 1230
Free Phone: 0508 626 2254
Email: admin@twr.org.nz

WHĀNAU/AIGA SERVICES

Baderdrive Community Trust
Advocacy, Whanau Ora, Social
Services Support | Bdct.org.nz
09 254 4340 | info@bdct.org.nz

Barnados Aotearoa
33 Cape Road | Ph: 09 625 3600
auckland@barnardos.org.nz

B4Baby Breastfeeding Support
(Turuki Healthcare)
b4baby@thc.org.nz | 0800 242 229

Family Start (Turuki Healthcare)
Home visiting support service
familystart@thc.org.nz

Good Seed Trust
Strengthening families to thrive &
succeed | www.goodseedtrust.co.nz
info@goodseedtrust.co.nz

ME Family Services
ECE, social services, environment, &
more | mefsc@mefsc.org.nz
09 256 0810 | https://mefsc.org.nz

Ohomairangi Trust
Free parenting programmes
372 Massey Road, Māngere East
www.ohomairangi.co.nz
admin@ohomairangi.co.nz

Strive Community Trust:
- Family Service Centre Department
familycentre@strive.org.nz | 09 2573424
- KEYS – Youth Services Department
ysadmin@strive.org.nz | 0800 787 483