

FREE!
EDITION #82
MAY 2026

NZ COMMUNITY NEWSPAPERS AWARDS 2024
BEST COMMUNITY INVOLVEMENT - WINNER
BEST FRONT PAGE MAGAZINE - FINALIST

Māngere's 275 times

Our stories, our people, our Māngere
Kōrero paki ō tatou, Tāngata ō tatou, Ngā Hau Māngere ō tatou



WOMEN'S RUGBY IS BACK

The Manukau Rovers Women's rugby team take on the College Rifles, their first home game in seven years.
Read more on page 11.

Photo: Joanne Latif

GET PEACE OF MIND WITH A NEW BUILD

Remove and rebuild with GJ's "It was the better option to knock down and rebuild than try to renovate. Just the peace of mind you have because its brand new." – York Family

09 274 2082 / gjjardner.co.nz



G.J. Gardner. **HOMES**

EDITORIAL



Aerial shot of the 2025 TwoSevenFive Day. Photo: @Swankyseriez

This is one to mark in your diaries!

The annual TwoSevenFive Day event is gearing up for its seventh year and the easiest way to remember the date is in the name, 275.

It's held on the 27th of May and will be located in the Māngere Markets space from 10am to 8pm.

The day is becoming an annual tradition for Māngere locals and it has grown exponentially each year!

Expect to see live music and

performances from local artists, and schools, eat the best local food and also catch up with that friend from down the road you've been meaning to see for a while.

This day is also an important chance for all of us to come together and celebrate what makes this such a great community - so make sure you don't miss it.

275 Times will also have a stall there so come and say hi and grab a copy of our latest edition.



Editorial Team: Jo and Justin Latif

✉ editor@275times.co.nz

📷 [instagram.com/275Times](https://www.instagram.com/275Times)

📘 [facebook.com/275times](https://www.facebook.com/275times)

🌐 www.275times.com

📍 givealittle.co.nz/org/mangere-275-times

Want to advertise with 275 Times or have a story idea?

Email editor@275times.co.nz

CONTENTS

- 3 Haddon House at 275 Day
- 4 The Housing Foundation
- 5 Launch of new bike delivery
- 6 Holiday Inn
- 7 New Youth Mentorship Programme
- 8 Sanskrit School of Dance
- 9 Re-opening of Walter Massey Park
- 10 Mural Project at Eco Hub
- 11 Manukau Rovers Women's Rugby
- 12 Justine Skilling & the Ngahere Guide
- 13 Call to Wallis with Justin Haiu
- 14 Business Classifieds
- 15 What's On in Māngere
- 16 Community Directory

TE WĀNANGA LAUNCHES FIRST CERTIFICATES IN TAONGA PUORO AND MĀORI ASTRONOMY

(sponsored content)

Te Wānanga o Aotearoa is breaking new ground with the launch of two first-of-their-kind mātauranga Māori certificates, marking a new era for Indigenous knowledge education in Aotearoa.

The New Zealand Certificate in Taonga Puoro and Te Tohu Tātai Whetū Certificate in Māori Astronomy will be available as pilot programmes in Semester B 2026, responding to the growing needs and aspirations of taurira, iwi, and communities across the motu.

"Through consultation with iwi and our communities, we heard a strong call for learning opportunities that uphold and advance mātauranga Māori," says Chief Executive Evie O'Brien. "In particular, there was a clear desire for deeper understanding of star knowledge, especially around



Matariki and Puanga, and taonga puoro. We have listened to those calls and we are excited to announce these pilot programmes.

"Both certificates have been designed with the support of renowned industry experts. They are practical, grounded in te ao Māori, and future focused."

Te Tohu Taonga Puoro fills a longstanding gap in formal education around the traditional instruments of Māori culture. Despite growing demand for taonga puoro in health, rehabilitation, and hauora settings, it has previously existed only as a small component within broader Indigenous studies or music theory

carried by each instrument.

Te Tohu Tātai Whetū responds to the growing celebration of Matariki, Puanga, and Maramataka across Aotearoa. Translating to "starry patterns" or "constellations", the programme introduces taurira to Māori astronomy and how the sun, moon, and stars guided the lives of tūpuna for generations. It reflects the diverse and specialised mātauranga held across different rohe, hapū, and iwi throughout the country.

Applications for both programmes are open now. Visit the Te Wānanga o Aotearoa website to join the waitlist.

HOW 275 DAY HAS HELPED BOOST MĀNGERE'S SMALL BUSINESSES



Paki (centre) with the Haddon House team at the 2025 TwoSevenFive Day.

As Haddon House prepares for their fifth year at TwoSevenFive Day, Paki looks back on what the event has meant for the business, and what keeps drawing them back each year.

The first time Haddon House set up a stall at 275 Day, they had no real benchmark for what to expect. It was their first ever market. Within the first hour, they had sold out completely.

That was four years ago. In 2026, they return for their fifth consecutive year, and the pattern has held: every year they double what they bring, and every year it is still not quite enough.

"The support from the community is incredible," says Paki. But when he reflects on the journey, the sellouts are not really the point.

"What I have valued most is not just the sales. It has been the relationships. We have grown alongside other local businesses, community groups, and services. We have all had wins, setbacks, and moments where we had to pivot, but we have done it together. That is the real spirit of 275 Day."

Over the years Paki has watched 275 Day change. More locals come through each year, but now people from outside Māngere are making the trip too, drawn by what the community has built.

For him, that reach matters. "Every year we get to challenge stereotypes and show the wider city the excellence, talent, hospitality, and quality that exists in Māngere. "You can feel the pride our people



have in the day. It is more than an event. It is Māngere Day." While, 275 Day has been a real launching pad for Haddon House. Paki is clear that what makes the event special goes well beyond any individual business.

"On that day, politics, religion, and differences do not matter. What matters is community, connection, and doing what is best for Māngere. It has been a place where people come together because they genuinely care. That is what makes 275 Day so special."

For Haddon House, that is reason enough to keep coming back, and to keep bringing more food than last time.

AUCKLAND, **531PI IS NOW ON 102.2FM**

CAN'T RETUNE? STREAM WITH US
ANYTIME AT PMN.CO.NZ





Come with us and change your life!

13-19 WELBY PL MĀNGERE WEST

If you're dreaming of being a home owner, Māngere West could be the place to begin. Welby Place offers the opportunity to stay close to the communities you know, while stepping into a home of your own.



With **Shared Ownership** you buy 60%.
We buy 40% until you can buy us out.

2 Bed from **\$685K**
60% from **\$411K**

3 Bed from **\$760K**
60% from **\$456K**

4 Bed from **\$860K**
60% from **\$516K**



@housingfoundation

PROPERTY FEATURES



Townhouse & Stand-alone options



2, 3, 4 Bedrooms Homes



1, 2 Bathroom



Open Plan



Off-street Parking

275 TIMES NOW DELIVERED BY PEDAL POWER



We're excited to announce that we're trialing out a brand new way to get Māngere's 275 Times delivered - and it's powered by pedals not petrol.

We've partnered with the amazing team at Triple Teez BikeFit to deliver your favourite community newspaper all around Māngere.

Please show your support as we test out this exciting venture. Keep an eye out for the Triple Teez riders in our neighbourhood as they're out doing deliveries.



A delivery from Simon (right) from Triple Teez to ME Family Services.

MESSAGE FROM YOUR LOCAL MP

Talofa lava, and warm Pacific greetings. Times continue to be tough for New Zealanders, as the weekly costs of fuel, food, electricity, and housing continue to be unaffordable for many Kiwis. Christopher Luxon has promised to make the cost of living better but has instead made it worse.

Statistics New Zealand regular data confirms what New Zealanders are feeling, increasing fuel cost electricity prices have risen 20 percent, necessities like food cost more and healthcare has become more expensive. Before the conflict in the Middle East began, this has increased much more and Kiwis have now been plunged into a fuel crisis. The economic increases cannot just be blamed on global factors, the



Government has failed to get a grip on the cost of living.

I want our community to know that Labour has a plan to prioritise a more affordable New Zealand.

For election year 2026, this government has changed the law. It is important to remember to register

to vote and check your details are up to date. In December 2025, the law change came into effect which means there will no longer be same day enrolment.

The last day to enrol before the general election on 7 November will be Sunday 25 October, it is important to check your details and address. Go to the Electoral Commission website at www.vote.nz.

For a local query, feel free to email mangere@parliament.govt.nz or make an appointment to discuss your issue with the Māngere Electorate Staff on 09-2731150, Monday to Friday.

Manuia tele
Lemauga Lydia Sosene
MP for Māngere

*Approved by Lemauga Lydia Sosene
MP, Parliament Buildings, Wellington
Funded by Parliamentary Service*

(sponsored content)



IT'S ALL HAPPENING HERE

CELEBRATIONS. CONFERENCES. COMMUNITY. ALL IN ONE PLACE

Whether you're planning a wedding, hosting a birthday, organising a community event, or running a conference, Holiday Inn Auckland Airport brings it all together.

From intimate occasions to large-scale events, our versatile spaces, experienced team, and full-service offering make every event seamless.

EVERYTHING YOU NEED, RIGHT WHERE YOU NEED IT

- Flexible event spaces for 10–400 guests
- On-site catering & bar packages
- Accommodation for your guests
- Free parking
- Minutes from Māngere & Auckland Airport
- Dedicated events team to support you
- Unwind with drinks at Rumpus Bar and dine at Vapor Restaurant



Contact Us
Email: Events.HIAucklandAirport@ihg.com
Tel: 64 9 275 1053

 **Holiday Inn**
— BY IHG —

AUCKLAND AIRPORT

275 TIMES YOUTH MENTORSHIP PROGRAMME KICKS OFF WITH MĀNGERE COLLEGE



Māngere College Media Club students involved in the project. Back Left-Right: Freya, Ausha, Thein, Alisha, Trisha. Front Left-Right: Safa, Sarah, Shaziyana, Laurence.

Māngere's 275 Times is embarking on a mentorship programme with Māngere College with support from the Māngere-Ōtāhuhu Local Board.

The project aims to unlock the potential and promise of our youth and we aim to develop a project where our rangatahi are given a sustained level of real-world media

experiences in video-making, and writing, with a focus on telling stories that are crucial to helping our community thrive, particularly stories that instil pride and resilience, assist with language and cultural preservation. The Māngere College Media Club students have accepted the challenge and will be receiving



275 Times Managing Editor Joanne Latif (centre right) with the media students.

prezzy card vouchers for their time, and a new iphone to create content. The students first opinion piece will feature in the next edition so watch this space!

A huge thank you to the Māngere-Ōtāhuhu Local Board for providing the grant to cover 3 months of the programme.

MAANGERE PRINCIPALS ASSOCIATION UPDATE

Kia ora koutou, tālofa lava, mālō e lelei, and warm Pacific greetings. I'm Ben Hutchings, Principal of Mountain View School | Te Kura Tirohanga Maunga - the school that has the best view of our maunga here in Maangere. Beyond leading my own kura, I have the privilege of serving as the President of the Maangere Principals Association (MPA).

The MPA is a collective of committed local school leaders who all share one clear, unapologetic mission: "...for Maangere." We aren't just a group of administrators; we are a village of educators who believe that our community deserves the absolute best.

Our focus is squarely on our tamariki and mokopuna. We work together to ensure that every child in our care is not only safe and happy but truly thriving with confidence - kia puawai me te maia. We know that when we act

as a collective, we can create more opportunities for our young people to realize their latent potential.

Our aim is for Maangere to be the educational pride of South Auckland. We are dedicated to producing the next generation of role models who will lead and serve this community with pride. But we also know we can't do this in isolation. Real success takes community - he tangata. It takes whaanau, iwi, and schools working in sync to wrap around our learners.

We are proud of the journey of growth and development, but also history and diversity of Maangere. By weaving our strengths together, we are building a legacy of excellence right



Ben Hutchings, Principal of Mountain View School.

here in our own backyard. Ngā mihi nui, Ben Hutchings

SANSKRIT SCHOOL OF DANCE

CELEBRATING CULTURE THROUGH DANCE & ARTS



A Māngere-based dance and arts school is on a mission to nurture creativity, confidence, and emotional wellbeing in communities across South Auckland.

Sanskriti School of Passion was founded by Shweta, who brings over 18 years of experience in dance and arts education. Since launching in 2018, the school has grown into a vibrant community hub offering dance, arts and craft, music, Hindi language,

yoga, and fitness classes. Students have performed at events across New Zealand and internationally, gaining confidence, discipline, and self-belief along the way. The school recently took part in a multicultural showcase at Western Springs, where different cultures came together through dance and storytelling. Shweta believes the arts are just as

important as academics. "We are teaching our children how to read and write, but we also need to teach them how to stay happy and develop emotional strength," she says. The school also runs specialised music and movement sessions for neurodivergent children, providing a safe and inclusive space for expression in Māngere. **For more info head to sanskriti.ac.nz.**



MINOR DWELLINGS MAJOR UPSIDE

Build a minor dwelling or granny flat with GJ's today.

If you're looking for extra space for family, a rental investment, or a more affordable first home option on family land, a minor dwelling could be the answer.

New government legislation allows granny flats up to 70 square metres, to be built without needing a building or resource consent.

Talk to GJ's today, we have a range of designs or can design for your section.

09 274 2082 / gjjardner.co.nz

G.J. Gardner. HOMES

THE LEGACY CONTINUES: RE-OPENING OF WALTER MASSEY PARK



Valerie Lui (right) at the opening of Walter Massey Park



The crowd of loyal supporters, local board members and club members at the opening.

Walter Massey Park is open again, and for the Māngere East Rugby League Football and Sports Club, the moment carried real weight. Founded in 1963, the club marked 63 years of history with the reopening and blessing of three newly upgraded fields.

Speaking at the opening, Club Chairperson Valerie Lui reflected on what the fields represent beyond the physical upgrades. "They are a place where a legacy continues, where our children continue to grow, and where our families gather and where our community stays connected."

The upgrade was years in the making. In 2021, the Hawks Special Projects team put forward a proposal to upgrade Fields 1, 2, and 3, with the Māngere-Ōtāhuhu Local Board advocating for the project with Auckland Council. Works ran from October 2025

through to April 2026.

The improvements include conversion of the soil fields to sand-based playing surfaces, new irrigation and drainage systems, LED sports lighting across all three fields, new footpaths and fencing, an upgraded playground, and improved carparking.

Lui acknowledged those whose work made it possible. "I'd like to sincerely thank the Māngere-Ōtāhuhu Local Board and also acknowledge the many people who have worked tirelessly behind the scenes over the years. Your quiet dedication and effort have helped bring all of this to life."

She also paid tribute to the club's members, past and present. "Your commitment and passion have shaped this club and created the foundation we stand on today. This moment belongs to all of you."



The blessing of the grounds.

The upgraded park will support rugby league, netball, football, and wider community activity, providing a base for tamariki, rangatahi, and seniors across Māngere East for years to come.

**"...[THE FIELDS]
ARE A PLACE
WHERE A LEGACY
CONTINUES"**

MASON & MORTIMER
Lawyers

*"Looking after your
legal needs locally."*

Ph: 09 296 0037

4/29 Coronation Rd, Māngere Bridge (By Naomi And Bill Kirk Park)

E: info@mamlaw.co.nz

MURAL PROJECT A LABOUR OF LOVE FOR MĀNGERE COMMUNITY



Sonny Tuiletufuga, local artist and tutor for Mūpara Studios

A two-year passion project has come to life on the walls of Māngere's Eco Hub, with a stunning mural series created by students from Māpara Studios now on public display.

Art tutor Sonny Tuiletufuga, who grew up in Māngere and remembers hanging out at the local library as a kid, helped guide the project alongside coordinators Margaret and Julia, who first brought their vision to the Wednesday classes at Māpara Studios.

"Working with these guys is a lot more better for my soul," says Sonny, who also produces music and designs clothes. "They're all from different spectrums, it's

totally different and more humbling."

The murals involved students from across the disability spectrum, with techniques carefully adapted to suit each person's needs. One highlight was a blind student who helped paint part of the Pacific Ocean using her hands, guided by a specially made mould.

For many students and their families, seeing their work displayed publicly has been deeply moving. Parents have been stopping by regularly, many struggling to find the words. "We just can't believe that some of our kids' work is up on display," one parent told Sonny, a sentiment echoed by many in the community.



Mūpara Studios students and tutors in front of the mural they created.

The project was supported by Foundation North funding and Aro Memorials' and involved a range of community organisations in its early stages, including I AM Māngere. During the first year, holiday programmes brought in local children as young as five to contribute to the walls.

Unfortunately, with the Eco Hub area set to close, the murals will need to be relocated, though Sonny is hopeful they'll move with the facility to its new home so the community can continue to enjoy them.

For Sonny, who has come a long way from spray painting streets in the 80s, the project represents something full circle. "It's 2026 and I can't believe I'm teaching kids now. I feel pretty humble and blessed." *Māpara Studios runs weekly art classes in Māngere and Ōtara.*



Julia Tu'ineau from Te Ararata Stream Team.

"WE JUST CAN'T BELIEVE THAT SOME OF OUR KIDS' WORK IS UP ON DISPLAY."

YOUR AD COULD BE HERE

Email: editor@275times.co.nz to find out more

WOMEN'S RUGBY IS BACK

MANUKAU ROVERS WOMEN'S TEAM RETURN AFTER 7 YEARS



The Manukau Rovers Women's Rugby team and trainers with Manager Cindy Wong (far left, kneeling) after their first home game.



Elisha Byrne (left) and Victoria Cocker (right), Manukau Rovers Women's co-captains.

After seven years without a women's team, Manukau Rovers is back, and if last weekend's debut is anything to go by, they're here to stay.

Co-captains Elisha Byrne and Victoria Cocker were the driving force behind the revival, showing up to pre-season training for five to six weeks as the only two players, rain, storm, and all.

"This is home. We're born and raised, proud from Māngere," says Elisha.

"We want the team to grow here and bring our Māngere together."

What started as two women and a trainer slowly grew through social media advertising and word of mouth into a full squad with subs. For Victoria, watching that growth made every early morning worthwhile.

"Having her show up every training meant a lot to me," she says of Elisha.

"It made me motivated to invite everyone else to make the team grow and represent Māngere after seven years."

The team's debut may have ended in a loss to College Rifles, but the scoreboard was far from the whole story. Players included women returning from having children, newcomers who had



One of the first training sessions. (L-R) Robbie (kneeling) Carolyn, Mali Auva'a, Elisha Byrne, Victoria Cocker (kneeling).

never played rugby, local high school students, and athletes filling unfamiliar positions.

"The mana was there, the heart was there," says Victoria.

"They didn't let the scoreboard determine who we are. That's a big thing for us."

Team Manager Cindy Wong, a Rovers supporter since 2008, describes the moment as a dream come true.

"The opportunity is unlimited," she says, adding that the club is already looking to field two teams in the upcoming tens competition.

The support behind the scenes has been equally impressive. Club delegate Carolyn Stein helped pull the team together, sponsorship



from Māngere Tavern covered aftermatch polos, Auckland Rugby contributed towards a brand new playing kit, and experienced coaches and trainers have provided clinics throughout the season.

For Cindy, the wider impact goes beyond the game.

"Some lifelong friends can be made in a sports team and we've already seen that naturally happen. We have all walks of life, which makes the team so special."

New players are welcome and no experience is necessary. As Victoria puts it: "Anyone and everyone welcome. Come play. We've got your backs."

HE KĀKANO: SOWING SEEDS OF HOPE IN MĀNGERE SOILS



Matariki planting day at Ihumaatao, organised by Makaurau Marae/Te Ahiwaru Trust. Justine Skilling (inset).



Nga Iwi School students at a planting day at Ashgrove Reserve in the community orchard.

Imagine being able to walk down your local street in the middle of summer under cool shady trees. Or being able to pop down to the park to harvest kai (food) or rongoā (medicine) for your family.

With Māngere's extreme lack of trees, these things may seem impossible to imagine, but our community's very own Ngaa Hau o Maangere Ngahere Planting Guide holds the key to making this a reality.

The guide - created in 2023 by local mana whenua hapū Te Ahiwaru and Te Aakitai, ME Family Services, Uru Whakaaro and Kāinga Ora - weaves together mātauranga Māori, community knowledge and ecological science and is available online to help anyone who wants to plant trees or gardens in Māngere. Its practical, step-by-step advice ensures the right plants are growing in the right places, and it has helped our community

and others to plant little pockets of ngahere (forest) in backyards, parks, schools, churches, community gardens and along the banks of streams all over Māngere.

This work to regenerate ngahere in our community is now the subject of a PhD research project by local resident Justine Skilling. Her thesis explores the benefits of this mana whenua-led, collaborative, place-based, intergenerational work, as well as the challenges. She has found that ngahere regeneration is already contributing to the wellbeing of people and the environment. "It's not just about getting trees in the ground, but is also about helping to connect our community with the taiao (natural world) and with mana whenua relationships with this place", she says.

However, there is still much to do, and Kāinga Ora's funding for the project has now ended. "My research shows that it's so important

for the community to be resourced to continue this work, to make sure that everyone planting in our area is using the guide and that we can keep working together to grow the ngahere", she says.

Skilling also hopes that her research will remind people that the guide exists, and support funding applications for ongoing co-ordination and facilitation of this work.

"I'm just trying to help water the seed a little so it can grow and flourish into the beautiful Māngere ngahere we dream of and so desperately need".

SCAN FOR NGAHERE
PLANTING GUIDE



275 TIMES EVENTS

Stay up to date with all things Māngere!

Check out our events calendar at www.275times.com/events to find all the latest events happening in Māngere.

Got an event of your own? It's easy to add it! Just head to the calendar on our website, Click on 'Submit

your event' and fill out the form with details of your event. Once submitted, your event will be reviewed and uploaded.

Or, if you'd prefer, simply email the details to us at editor@275times.co.nz and we'll add it for you.

Let's keep Māngere connected.



A JOURNEY BACK TO 'UVEA:

JUSTIN HAIU BRINGS CALL TO WALLIS TO THE MĀNGERE ARTS CENTRE

Opening the Pacific Dance Festival this June, *Call to Wallis* is a personal work rooted in reconnection, ancestry, and a culture Justin Haiu almost never found his way back to.

Justin Haiu, a Māngere local, grew up not really knowing his father's culture. His dad had come to New Zealand from 'Uvea, part of the Wallis and Futuna islands in the Pacific, and had made a deliberate choice to raise his children in the New Zealand way. Justin's mum is Pākehā. There was no shortage of identity to draw on, but the 'Uvean thread was thin.

Then his father passed away. That thread got thinner still.

"When he passed, we just didn't have that connection," Justin says. Growing up, he found identity elsewhere, in Māori culture, in hip hop. It was not until a cousin from New Caledonia came into his life that something shifted. That connection led to a trip across, and a reunion with his father's family that he had not expected the scale of.

"On my mum's side, we've got four first cousins. Over there we've got 45." He says.

"If we hadn't reconnected, we would not have known."

Call to Wallis grew out of that journey. The show blends contemporary movement with street and cultural forms, tracing themes of belonging, ancestry, and the pull of home.

It features five performers and a live musician, and weaves in 'Uvean songs and movement as a direct nod to his father's heritage.

"It's a little wink to his culture," Justin

"I WANTED TO SHARE SOME OF THE CULTURE, THE SONGS, THE LANGUAGE, THE DANCE."



Justin Haiu (centre) in a *Call to Wallis* scene

says.

He is clear about what he wants audiences to take from it. "I wanted to share some of the culture, the songs, the language, the dance. And I guess, somewhat a reconciliation. My dad left there, came here, and there was just a disconnect. This is about being able to reconcile back with the family."

The show also carries a wider significance. 'Uvea and the Wallis and Futuna islands are among the lesser-known Pacific nations, and work like this that centres their culture on a main stage is rare.

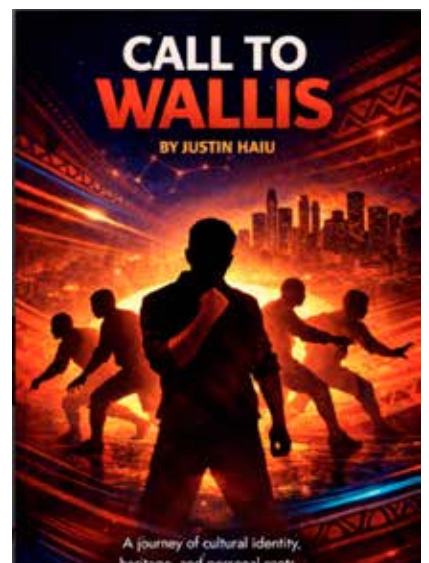
Justin acknowledges that. "Not many people have heard of the islands."

Call to Wallis opens the Pacific Dance Festival at the Māngere Arts Centre on 5 and 6 June 2026. The festival brings together artists from 'Uvea, Kiribati, Rotuma, Samoa, Aotearoa, and the wider Indigenous Pacific diaspora across a programme of six performances and workshops running through to mid-July.

For Justin, performing it here, close to home, feels right.

"It's a celebration of our culture and our people."

Call to Wallis runs 5–6 June at the Māngere Arts Centre – Ngā Tohu o Uenuku. Tickets and details at eventfinda.co.nz.



MĀNGERE BUSINESS CLASSIFIEDS

GET IN TOUCH IF YOU WOULD LIKE TO INCLUDE A LISTING HERE. STARTING AT \$20 PER CLASSIFIED

Kevin Madsen

Wooden Fence Repairs

Ph 021 027 73498

Located in Māngere Bridge.

Replace posts, pailings etc.

Julian Iosia

Māngere Based Accountant

02108236985

julian.iosia@gmail.com

Tali The Mowing Magician

Gardener & Landscaping

Ph: 0226464761

Email: talifakava@outlook.com

Socials: Fb, IG, Tiktok @

talithemowingmagician

K&N Cleaning.

We specialise in Move In/Move Out cleans, Deep Cleaning, and Builders Cleans.

021 292 2253 or via email at

kncleaning@outlook.co.nz.

Dessy Sportswear

Custom team uniforms for school and team sports. Email dessysports@gmail.com

The Queen Shirl'e Academy

Performing arts training, personal life coaching, podcast education, adult speed dating events, MC & event hosting. Ph 021 274 9979 qsacademy101@gmail.com.

Midas Onehunga

Car service, repairs, tyres, WOF, transmissions etc. 09 634 5983 26 Selwyn St, Onehunga

Applied Electrical

Māngere based electrical business.

www.appliedelectrical.co.nz

021 157 1864

Patrick@appliedelectrical.co.nz

Riva hub Ltd (+64 22 423 6306)

Riva Logistics - house moving and truck rental company

Classic Cleaner's - commercial and residential cleaning company

Riva Blossom - hand crafted flowers and earrings.

Email: riva.hub@outlook.co.nz

MĀNGERE TOWN CENTRE

Ph: 09 275 7078

office@mangeretowncentre.nz

www.mangeretowncentre.nz

FOOD & BEVERAGE

| | |
|--------------------|-------------|
| Mr Katsu Māngere | 0210376358 |
| Pacific Fresh Fish | 09 257 5135 |
| Pizza Curry Corner | 09 257 5100 |
| Sushi Time | 09 275 0893 |
| Zara Kebab | 0212105602 |

RETAIL

| | |
|----------------------------------|--------------|
| Feathers | 09 257 0909 |
| Jit Shoes | 09 275 0405 |
| Māngere Fashions | 09 256 0303 |
| Māngere Jewellers | 09 255 5907 |
| Māngere Mini Mart | 022 636 1371 |
| Māngere Post Shop | 021 762 478 |
| Megastar Fashions | 09 275 6962 |
| My Hairdressers & Barbers Salon | 09 218 9161 |
| Nesian Collective | 027 255 2049 |
| One Stop Pak Māngere | 09 215 8383 |
| Pacific Fashions | 021 510 071 |
| Regal Apparel International Ltd/ | |
| Megastar Fashions | 09 275 6962 |
| Sunlight clothing shop | 021 301 987 |
| TechFixers Māngere | 09 255 5105 |

SERVICES

| | |
|----------------------------------|---------------|
| BaderDrive Doctors | 09 275 858 |
| Beauty By Harpi | 022 182 0071 |
| Māngere Budgeting Services Trust | 0508 22 22 83 |
| Māngere Dental Centre | 09 275 7754 |

Kaitiaki O Manawa

Restores headstone art and inscriptions. Jade Rehu

Facebook page: Kaitiaki o manawa

Email: aotearoa102030@gmail.com

Custom Designz Workshop

Pacifika 21st keys & wall art
020 4889 258

Applied Electrical

Māngere based electrical business.

www.appliedelectrical.co.nz,

0211571864,

patrick@appliedelectrical.co.nz

A Rat's Tail

Māngere based Ethical Rattery, Online Store and Pet Boarding.
aratstail@gmail.com.

https://www.aratstail.co.nz/

MĀNGERE BRIDGE VILLAGE BUSINESS ASSOCIATION

Ph: 021 776 139

info@mangerebridgevillage.co.nz

www.mangerebridgevillage.co.nz

CAFE/RESTAURANT/TAKEAWAYS

| | |
|--------------------------|------------|
| Brandy's Roasts | 09 6363998 |
| Hong Kong Takeaways | 09 6347159 |
| Neptune Seafoods | 09 6369171 |
| Lucky Café | 09 6369400 |
| Ros Bake | 09 6345475 |
| Coronation Restaurant | 09 6340969 |
| Burger Shop | 09 2186327 |
| Happy Horse | 09 6365053 |
| Ruby Red Café | 09 6346454 |
| Phnom Penh | 09 6363586 |
| Hong Kong Bakery | 09 6367756 |
| Village Butcher | 09 6367856 |
| Black Box Pizza | 09 6369999 |
| Butter Chicken Factory | 09 2560500 |
| Golden Sunrise Bakery | 09 6348365 |
| Māngere Bridge Takeaways | 09 6342463 |

CHILDCARE

| | |
|-------------------------|------------|
| Small Kauri Educ Centre | 09 6360644 |
|-------------------------|------------|

HAIR/BARBER/BEAUTY

| | |
|------------------|--------------|
| Village Barber | 021 135 6370 |
| Keith the Barber | 027 478 3598 |
| Bridge Beauty | 09 3201667 |
| Hair Zone | 09 6365747 |

HEALTH

| | |
|--------------------------|------------|
| My Dental Mangere Bridge | 09 2421130 |
| MB Pharmacy | 09 6364249 |
| Dr Usha Chand | 09 6342542 |
| Local Doctors | 09 2544290 |

LAUNDROMAT

| | |
|-----------------------|------------|
| Coronation Laundromat | 0221093125 |
| Sunrise Laundromat | Shop 27 |

LAWYERS

| | |
|--------------------|------------|
| Mason and Mortimer | 09 2960037 |
|--------------------|------------|

REAL ESTATE

| | |
|-----------|------------|
| Ray White | 09 6369992 |
|-----------|------------|

RETAIL

| | |
|------------------------|------------|
| Bridge Mini Market | 09 6365433 |
| Post Shop | 09 8926109 |
| St Vincent de Paul | 09 6361290 |
| Coin Save | Shop 33 |
| Coin Max | Shop 34A |
| Hammer Hardware | 09 6367084 |
| Māngere Bridge Flowers | 09 6221292 |
| Māngere Floral Studio | 09 6366291 |
| Fresh Choice | 09 6368424 |

WHATS ON IN MĀNGERE

MĀNGERE ARTS CENTRE GATHERED & GROWN HERE

Friday 29 May, 7pm-8pm.
Photographic Portrait Series by
Vinesh Kumaran.

SOUTHERN CROSS CAMPUS JUNIOR SHOWCASE 2026

Wednesday 24 June, 1.30pm &
6.30pm.

Head to eventfinda.co.nz for tickets

TE ARARATA STREAM FREE STREET BBQS

Molesworth & Hall Ave, 24th May
3.30pm-5pm. Māngere Town Centre,
27 May, 3.30pm-5pm.

MONITORING

Saturday June 27, 10am at the
Elmdon Envirohub, Corner of
Watchfield Cl & Elmdon St. All
welcome.

FREE KAI @ MOANA NUI-A-KIWA

Every Wednesday 5.30pm. Ran
by Life Community Kitchens. All
welcome.

PAPATUANUKU KOKIRI MARAE

KAI IKA. Bring cans to swap for free
fish head and frames. Māngere Centre
Park car park. Wednesdays & Fridays:
11.00am.

KOHA CAFE. Open Thursday, Friday
and Sunday, 10am-2pm.

PROBUS CLUB OF MĀNGERE BRIDGE

Active retirees are invited to come
along for morning tea, fun, friendship.
Meets 4th Friday of each month.
Bridge Park Bowling Club, 27A Taylor
Road.

MĀNGERE BRIDGE INFO EVENINGS (BRIDGE CONNECT)

Tuesday 26 May, 6.30pm-8.30pm.
Ambury Farm Barn. Learn about our
community, it's history and more.
Lindsay Jones 021546379.

THE MĀNGERE BRIDGE WALKING GROUP

Meets every Tuesday and Thursday
at 8.50am outside the Hong Kong
Bakery for an hour's walk followed by
time at one of the cafes. All Welcome.

BOXFIT (WITH PONO BOXFIT)

Free community boxfit fitness
classes. Mondays 6pm, Māngere
East Community Centre. Wednesday

FREE XTREME-HIP HOP

Free step classes every Wednesday
at the Māngere Town Centre
(Zumba Stage) brought to you by
Baderdrive Community Trust with
PhatBoi Fit. Bookings a must via IG:
[bdcommunitytrust](https://www.instagram.com/bdcommunitytrust). Beginners - 6pm-
6.45pm. Intermediate - 7pm-7.45pm

NGAA MAANGA O MAANGERE Community Network Meeting

Thursday 28th May, 10am-12pm,
at the Māngere Community Law
Centre. All welcome.

FRIENDS OF THE FARM

MĀNGERE BRIDGE CRAFT GROUP
Every Thursday, 2pm-4pm at the
Māngere Bridge Library.

MĀNGERE BRIDGE COMMUNITY

ORCHARD WORKING BEE
Saturday 6 June, 2pm-4pm, behind 84
Wallace Rd, Māngere Bridge.

BRIDGE CONNECTION INFORMATION EVENINGS

Every Tuesday, 6.30pm-8pm at St
James Church Hall. Connecting with
our history.

MĀNGERE BIKEFIT

Bikefit Repairs, Tue/Wed/Thur 11am-
4pm, Sun 11am-2pm.

**WOW Rides Wednesday's On
Wheels.** 5pm. Waddon Place.

ME FAMILY SERVICES

WHAKAORANGA AWA HIKOI
5 June. 10am-1pm. 92 Wickman Way
(bus stop). Come along to our monthly
hikoi as we celebrate the beauty,
history, and life of our local stream —
Harania Awa.

LIVING RESOURCEFULLY

6 week programme, winter wellness
edition. Begins Tuesday 26 May,
10am-12pm. For more info contact
Colleen@mefsc.org.nz.

TURUKI HEALTHCARE

Head to [www.turukihealthcare.org.
nz/bookings](http://www.turukihealthcare.org.nz/bookings) for an amazing range of
community classes & workshops:

**Low Carb Cooking Class, Romiromi,
Walk & Talk, Maramataka, Art
Therapy, Raranga Hauora, Kuia/
Kaumatua programme.**

MUST BOOK - jcannons@thc.org.nz
[https://www.turukihealthcare.org.nz/
bookings](https://www.turukihealthcare.org.nz/bookings).

MĀNGERE EAST COMMUNITY CENTRE

FREE CLASSES

Mondays: Te Reo Māori (6pm-8pm),
Pono BoxFit Classes (6pm-7pm)

Tuesdays: Sewing for beginners
(10am-1pm), Te Reo Māori (12.30pm-
2.30pm), Hulafit (6pm-7pm), Ethnic
Arts & Crafts (6pm-8pm)

Wednesdays: Beginner sewing (5pm-
8pm)

Thursdays: Sewing for beginners
(10am-1pm)

Fridays: Korowai Class (10am – 2pm)
FREE Parenting Programmes (Ante
Natal, 3yr-8yr etc) Daily ESOL
Classes (English for speakers of other
languages) .

Venue hire plus bus and van hire also.
OSCAR Programmes.

REGISTER TODAY:

www.mangereeast.org
info@mangereeast.org | Ph: 275 6161

WHARE KOA MĀNGERE COMMUNITY HOUSE

141 Robertson Rd, ph:(09) 275 4920.
FB: @WhareKoa

IG: @wharekoamangere

MONDAY: Emerge Aotearoa: 10am-
12.30pm, Sew Simple: 1.30pm-
4.30pm, Tahī Moana Creatives 6pm
- 8:30pm.

TUESDAY: Akatangi Ukarērē:
10am-12pm, Fale Pasifika Parenting
Programme 1pm-3pm, Spoken Word
Navigators: 6.30pm-9pm

WEDNESDAY: Diamonds In The
Rough: 10am-12pm, Tuitu'u Heilala:
1pm-4pm, Adullum Art: 6.30pm-
8.30pm

THURSDAY: Tiare Taina Māmās
10am - 2pm, TULOU 11pm - 1pm,
GameTan 5:30pm - 7:30pm

FRIDAY: Polynesian Creative Arts:
10am-2pm, That Rental Plug 10am
- 12pm, Brownālfā Creative Lab:
4pm-8.30pm

SATURDAY (MONTHLY):

Naitisian Fijian Mothers: 5pm-9pm
Email: [naomi.tuaeu@aucklandcouncil.
govt.nz](mailto:naomi.tuaeu@aucklandcouncil.govt.nz).

AMBURY PLANTING DAY

Saturday May 23, 10am-12.30pm.
Follow the signs to the meeting
place. We'll lead you to the
planting site and work alongside
you, light food will be provided at
the end of planting.

Community DIRECTORY

A COMPACT LIST FOR COMMUNITY SUPPORT, RESOURCES AND ADVOCACY. CONTACT EDITOR@275TIMES.CO.NZ FOR ANY UPDATES

ADVOCACY

Auckland Action Against Poverty
Māori Wardens Office, Waddon Pl
advocates@aaap.org.nz

Citizens Advice Bureau Māngere
Shop 17, 93 Bader Drive
www.cab.org.nz | 09 275 6885
0800 367 222 | mangere@cab.org.nz

Communities Against Alcohol Harm
contact@communitiesagainstalcoholharm.co.nz

Māngere Law Centre
Shop 27, Mangere Town Centre
reception@mangerelaw.org.nz
https://communitylaw.org.nz/centre/
auckland/mangere/ Ph: 09 275 4310

MP for Māngere
Māngere Electorate Community
Office, Shop 9, 93 Bader Drive
Mangere@parliament.govt.nz

BUDGETING

Māngere Budgeting Services Trust
Shop 8B, Māngere Town Centre
appointments@mbst.org.nz
0508 222 283 | www.mbst.org.nz

Viola Budgeting
Māngere Baptist Church, Bader Dr
vpibs@vaiola.org | 09 256 9639
www.vaiola.org/contact.html

COMMUNITY FACILITIES

Cook Islands Development Agency NZ
287 Kirkbride Road, admin@cidanz.co.nz
https://www.cidanz.co.nz

Maangere Mountain Education Centre
100 Coronation Road, Māngere
Email: info@mangeremountain.co.nz
Ph: 09 634 7305

Māngere Arts Centre
Cnr Bader Drive and Orly Avenue
mangereartscentre@aucklandcouncil.
govt.nz | 09 262 5789

Māngere East Community Centre
372 Massey Road | Ph: 09 275 6161
info@mangereeast.org
https://mangereeast.org

Māngere Bridge Library
5/7 Church Road | 09 377 0209

Māngere East Library
370 Massey Road | 09 377 0209

Māngere Town Centre Library
IG: @mtc_lib | 09 377 0209

Moana-Nui-A-Kiwa (Pools & Leisure)
66R Mascot Avenue | 09 275 8979
mangerepools@aucklandcouncil.govt.nz

Ngatapuwaē Community Centre
phil.d@strive.org.nz | 09 275 4470

Old School Teaching Garden
299 Kirkbride Rd | https://
aucklandteachinggardens.co.nz/

Papatuanuku Kokiri Marae
141R Robertson Road, 027 256 1472
admin@pkm.org.nz | https://pkm.org.nz

Whare Koa Community House
141 Robertson Road | 09 379 2030
https://www.facebook.com/WhareKoa

COMMUNITY SAFETY

**Auckland Council Animal
Management Team (report dogs)**
Ph: 09 301 0101 | 0800 462 685

Neighbourhood Support Māngere
022 010 4707 | ns4mangere@gmail.com

**Neighbourhood Support Māngere
Bridge** | mangerebridgens@gmail.com

HEALTH & WELLBEING

Bader Health Care
09 275 8598 | info@bdhealthcare.co.nz

Turuki Healthcare
32 Canning Crescent | 0800 493 552
www.turukihealthcare.org.nz

HOMELESSNESS SUPPORT

LinkPeople
0800 932 432 | linkpeople.co.nz

Kāhui Tū Kaha
09 531 4040 | 0800 678 323
reception@kahuitukaha.co.nz

HOUSING SUPPORT

Monte Cecilia Housing Trust
30 Windrush Close, Māngere,
0800 624848.

Pacific Healthy Homes Initiative
(Support e.g. curtains, heating, insulation)
Cause Collective: 027 301 3326
thecausecollective.org.nz/contact-us
AWHI Healthy Homes Initiative:
referrals@awhi.co.nz or 0800 100642

Strive Community Trust
294A Massey Road, Māngere
Ph: 09 255 0144 | info@strive.org.nz

SUPPORT

**Fale Pasifika (Pacific Womens
Refuge)** Ph: 09 6220572
Crisis Line: 0800 733 843
admin@falepasifika.org.nz

I AM Mangere
027 348 9454 | www.iamhaponi.co.nz
connect@iamhaponi.co.nz

Māngere Work and Income
93 Mascot Ave Mangere
www.workandincome.govt.nz/about-work-
and-income/contact-us/index.html

Māngere-Ōtāhuhu Local Board
mangereotahuhulocalboard@
aucklandcouncil.govt.nz | 09 301 0101

Manukau Urban Marae Authority
Foodbank, Whānau Services + more
0800 686 232 | www.muma.co.nz

Martin Hautus Foundation Trust
0223920189 | talei@mhfoundationtrust.
org.nz | www.mhfoundationtrust.org.nz

Taime Pasifika Cancer Support
021 0248 5177 | https://taime.co.nz

**Te Oranga Kaumatua Kuia Disability
Support Services Trust**
64 Mascot ave | 09 255 5470
kingi.martin@teorangakk.org.nz

**Te Whanau Rangimarie (Women's
Refuge, Favona)** Ph: 09 275 1230
Free Phone: 0508 626 2254
Email: admin@twr.org.nz

WHĀNAU/AIGA SERVICES

Baderdrive Community Trust
Advocacy, Whānau Ora, Social
Services Support | Bdct.org.nz
09 254 4340 | info@bdct.org.nz

Barnados Aotearoa
33 Cape Road | Ph: 09 625 3600
auckland@barnardos.org.nz

B4Baby Breastfeeding Support
(Turuki Healthcare)
b4baby@thc.org.nz | 0800 242 229

Family Start (Turuki Healthcare)
Home visiting support service
familystart@thc.org.nz

Good Seed Trust
Strengthening families to thrive &
succeed | www.goodseedtrust.co.nz
info@goodseedtrust.co.nz

ME Family Services
ECE, social services, environment, &
more | mefsc@mefsc.org.nz
09 256 0810 | https://mefsc.org.nz

Ohomairangi Trust
Free parenting programmes
372 Massey Road, Māngere East
www.ohomairangi.co.nz
admin@ohomairangi.co.nz

Strive Community Trust:
- Family Service Centre Department
familycentre@strive.org.nz | 09 2573424
- KEYS – Youth Services Department
ysadmin@strive.org.nz | 0800 787 483